

HUMBERVPP
Violence Prevention Partnership

INTERVENTIONS PROGRAMME

TABLE OF CONTENTS

Page 03	INTRODUCTION
Page 04	HUMBER VPP INTERVENTIONS TIMELINE
Page 05	2026/27 PLANNED INTERVENTIONS
Page 06	YOUTH VOICE INPUT
Page 07	LOCATION OF INTERVENTIONS BY LA
Page 08	LOCATION OF INTERVENTIONS BY WARD & CONSTITUENCY
Page 09	HUB IN YOUR COMMUNITY
Page 10	BOX SMART
Page 11	BREAKING THE CYCLE: MENTORING
Page 12	EMPOWERING FUTURES
Page 13	FAIRPLAY 16+
Page 14	IRON GOALS
Page 15	ED NAVIGATORS
Page 16	STREET FIRST AID
Page 17	VIOLENCE PREVENTION YOUTH HEALTH CHAMPIONS
Page 18	SAFER FUTURES
Page 19	PREVENTION AND SAFETY EDUCATION PROGRAMME
Page 20	YOUNG FUTURES FUND
Page 21	TESTIMONIALS

INTERVENTIONS PROGRAMME – INTRODUCTION

The Humber Violence Prevention Partnership (VPP) is a multi-agency collaboration bringing together key organisations across policing, local authorities, health, education, and the voluntary and community sector to address the **root causes of violence** and improve community safety in the Humber region. Working collectively, the partnership adopts a **public health approach** to violence prevention, recognising that violence is preventable through early intervention, data-driven decision making, and coordinated action across systems.

This document outlines the planned interventions for 2026/27, setting out how the Humber VPP will deliver **targeted, evidence-informed activity** to reduce violence and its associated harms. The remit of these interventions spans primary, secondary, and tertiary prevention, including early years support, youth engagement, place-based initiatives, and focused work with individuals and communities most at risk of experiencing or perpetrating violence. The interventions are designed to address **underlying risk factors** such as adverse childhood experiences, social inequality, and lack of opportunity, while also strengthening protective factors within families and communities.

For 2026/27, the Humber VPP has placed a strong emphasis on ensuring that commissioned interventions are directly shaped by **local youth voice**. Providers have been required to demonstrate how their delivery responds to the key concerns, wants, and needs identified by young people across the region. These priorities have been informed through a range of engagement activity, including local **Hope Hacks, focus groups**, and wider youth engagement work, ensuring that interventions are relevant, responsive, and grounded in lived experience.

Funding for the Humber VPP is provided by the Home Office through the Serious Violence Reduction Programme (SVRP) grant, awarded to local Violence Reduction Units (VRUs). As a condition of this funding, all partnership areas are required to allocate a minimum of 30% of their total Home Office-funded intervention spend towards **high-impact interventions**. These are defined in line with the **Youth Endowment Fund Toolkit** as programmes that demonstrate either high impact or moderate impact with a strong evidence base. This requirement ensures that investment is directed towards approaches proven to reduce violence and deliver **meaningful outcomes** for children, young people, and communities.

Through this combined and targeted investment, the partnership aims to deliver measurable reductions in violence, improve outcomes for vulnerable populations, and build **safer, more resilient communities** across the Humber area.

HUMBER VPP - INTERVENTIONS TIMELINE

2022/23

INTERVENTIONS FUNDING
(INC. SVD)

£874,135.27

MATCH FUNDING

£60,563.19

TOTAL OF YP UNDER 25
ENGAGED

16,682

TOTAL PEOPLE AGED 25+
ENGAGED

0

PROFESSIONALS TRAINED

255

2023/24

INTERVENTIONS FUNDING
(INC. SVD)

£567,996.86

MATCH FUNDING

£131,823.03

TOTAL OF YP UNDER 25
ENGAGED

8,263

TOTAL PEOPLE AGED 25+
ENGAGED

12

PROFESSIONALS TRAINED

70

2024/25

INTERVENTIONS FUNDING
(INC. SVD)

£499,241.35

MATCH FUNDING

£202,108.75

TOTAL OF YP UNDER 25
ENGAGED

9,950

TOTAL PEOPLE AGED 25+
ENGAGED

66

PROFESSIONALS TRAINED

126

2025/26 - Q1-Q3

INTERVENTIONS FUNDING
(INC. SVD)

£276,070.41

MATCH FUNDING

£86,472.70

TOTAL OF YP UNDER 25
ENGAGED

7,632

TOTAL PEOPLE AGED 25+
ENGAGED

44

PROFESSIONALS TRAINED

566



**2026/27
PLANNED
INTERVENTIONS**

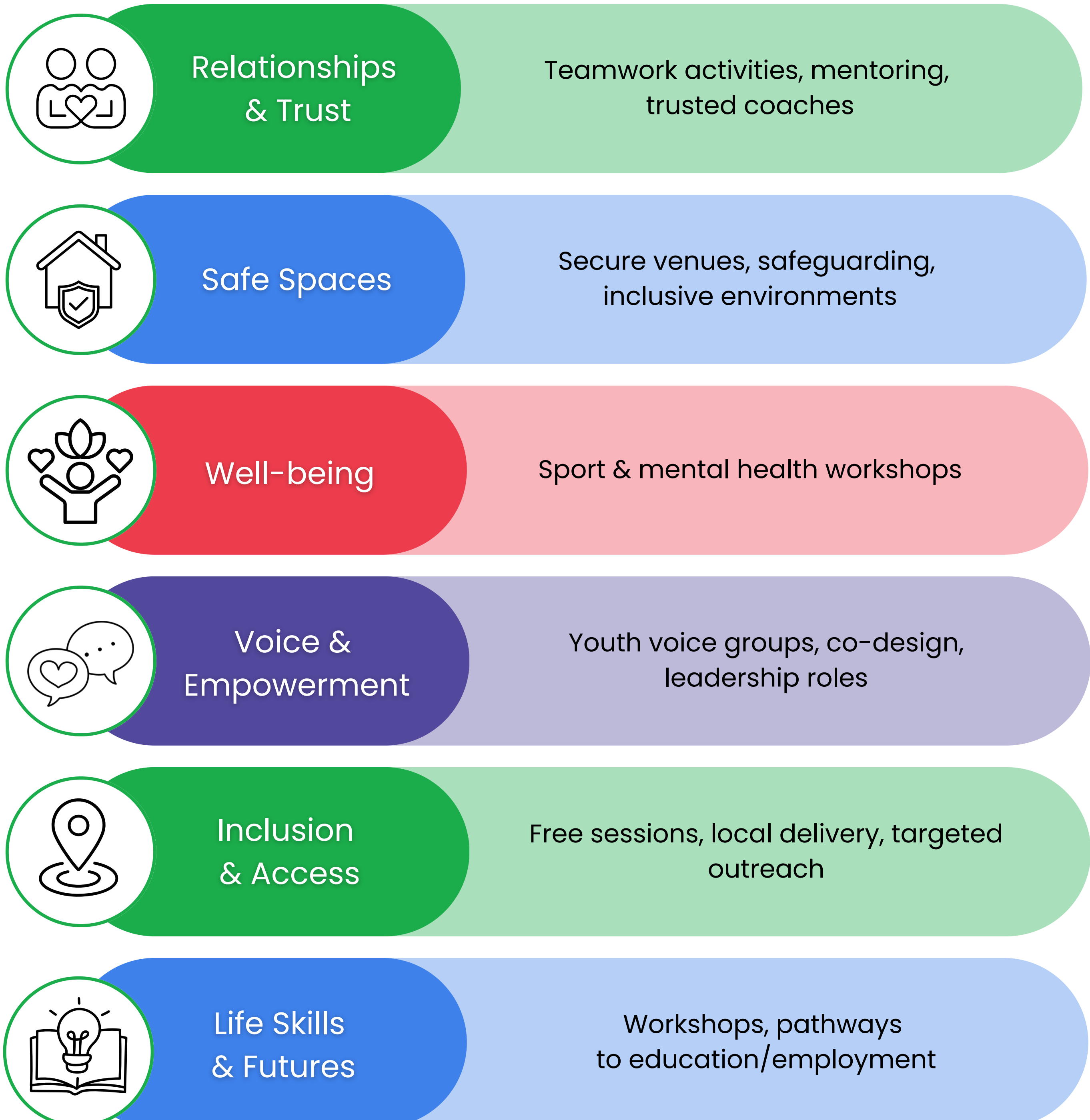
YOUTH VOICE INPUT

Why does youth voice matter in commissioning?

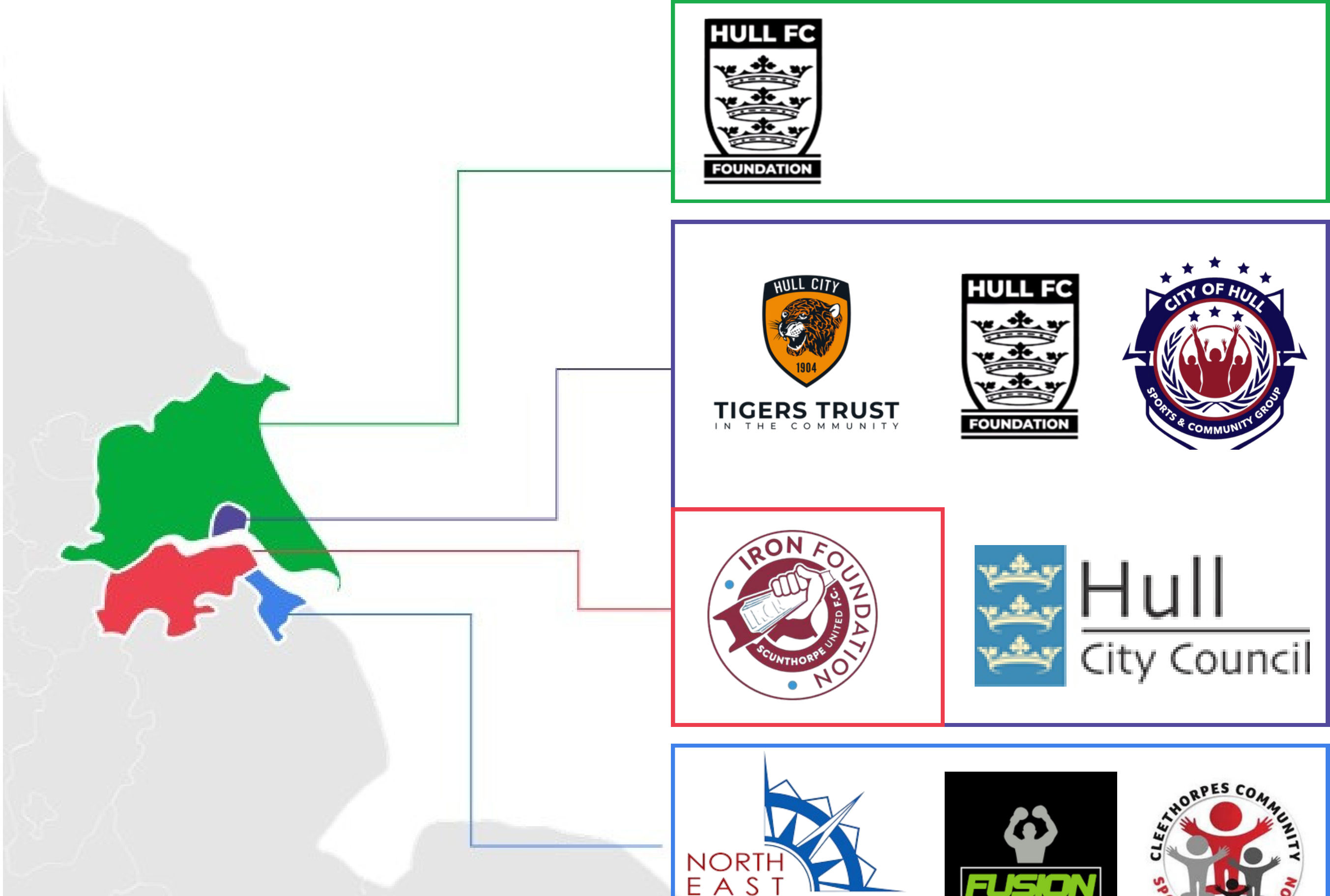
Placing young people at the centre of commissioning leads to services that are relevant, trusted, and effective. When young people shape provision, engagement increases, outcomes improve, and services better reflect real lived experiences.

Providers have been required to demonstrate how their delivery responds to the key concerns, wants, and needs identified by young people across the region. These priorities have been informed through a range of engagement activity, including local [Hope Hacks](#), [focus groups](#), and wider youth engagement work, ensuring that interventions are relevant, responsive, and meet the needs of local young people.

How our interventions respond to youth needs



LOCATION OF INTERVENTIONS BY LOCAL AUTHORITY



HULL & EAST RIDING

NAVIGATORS

HUMBERWIDE



Local Authority	Constituency	Ward	Intervention	Provider
Hull	Hull West & Haltemprice	St Andrews & Docklands	Hub in Your Community	Hull FC Foundation
		Newington & Gipsyville	Hub in Your Community	Hull FC Foundation
			Breaking the Cycle	Tigers Sport and Education Trust
	Hull North & Cottingham	University	Hub in Your Community	Hull FC Foundation
			Breaking the Cycle	Tigers Sport and Education Trust
		Orchard Park	Box Smart	City of Hull Sport and Community Group
			Breaking the Cycle	Tigers Sport and Education Trust
		Bransholme	Breaking the Cycle	Tigers Sport and Education Trust
	Hull East	Bilton Grange	Breaking the Cycle	Tigers Sport and Education Trust
		Longhill	Breaking the Cycle	Tigers Sport and Education Trust
		Ings	Breaking the Cycle	Tigers Sport and Education Trust
East Riding of Yorkshire	Beverley & Holderness	South East Holderness	Hub in Your Community	Hull FC Foundation
		Minster & Woodmansey	Hub in Your Community	Hull FC Foundation
	Bridlington & The Wolds	Bridlington Central & Old Town	Hub in Your Community	Hull FC Foundation
North East Lincolnshire	Great Grimsby & Cleethorpes	Sidney Sussex	Fairplay 16+	Grimsby Town Foundation
		South	Fairplay 16+	Centre 4/Creating Positive Opportunities
		East Marsh	Fairplay 16+	YMCA Humber
		Heneage	Fairplay 16+	The Fusion Centre
		Croft Baker	Fairplay 16+	The Trin
North Lincolnshire	Scunthorpe	Crosby & Park	Iron Goals	The Iron Foundation
		Kingsway with Lincoln Gardens	Iron Goals	The Iron Foundation
Hull & East Riding of Yorkshire			ED Navigators	NHS Humber Health Partnership
Hull & East Riding of Yorkshire			Empowering Futures	Tigers Sport and Education Trust
Humberwide (Hull, East Riding of Yorkshire, North Lincolnshire & North East Lincolnshire)			Street First Aid	St John Ambulance
Humberwide (Hull, East Riding of Yorkshire, North Lincolnshire & North East Lincolnshire)			Violence Prevention Youth Health Champions	We Do Wellbeing/RSPH
Humberwide (Hull, East Riding of Yorkshire, North Lincolnshire & North East Lincolnshire)			Safer Futures	Providers inc. but not limited to: Ben Kinsella Trust, 3sc, ICB Trauma Informed Care Programme etc.
Humberwide (Hull, East Riding of Yorkshire, North Lincolnshire & North East Lincolnshire)			Prevention and Safety Education Programme	Pol-Ed (West Yorkshire Police) NIOC (Eski)
Humberwide (Hull, East Riding of Yorkshire, North Lincolnshire & North East Lincolnshire)			Young Futures Fund	Hull City Council/Humber VPP



Hub in Your Community



Delivery Organisation: Hull FC Rugby Community Sports and Education Foundation

Predominant Approach: Sports Programme/Social Skills Training

Schedule

Day: Monday

Location: The Octagon, Hull

Time: 4.30pm to 6pm

Beneficiary: Girls aged 11 to 14

Day: Monday

Location: The Octagon, Hull

Time: 6pm to 7.30pm

Beneficiary: Young people aged 11 to 17

Day: Tuesday

Location: Withernsea Leisure Centre

Time: 4.30pm to 6pm

Beneficiary: Young people aged 11 to 17

Day: Wednesday

Location: Beverley Leisure Centre

Time: 6pm to 7:30pm

Beneficiary: Young people aged 11 to 17

Day: Thursday

Location: Bridlington Sports Centre

Time: 5pm to 6.30pm

Beneficiary: Girls aged 11 to 14

Day: Thursday

Location: Bridlington Sports Centre

Time: 6.30pm to 8pm

Beneficiary: Young people aged 14 to 17

Day: Friday

Location: University of Hull Sports Centre

Time: 6pm to 7.30pm

Beneficiary: Young people aged 11 to 17

Day: Friday

Location: MKM Stadium, Hull

Time: 6pm to 7.30pm

Beneficiary: Young people aged 11 to 17

Local Authority Areas Covered: Hull & East Riding of Yorkshire

Constituencies Covered: Hull West & Haltemprice, Beverley & Holderness, Bridlington and the Wolds, Hull North & Cottingham

Wards Covered: St Andrew's & Docklands, South East Holderness, Minster & Woodmansey, Bridlington Central & Old Town, University, Newington & Gipsyville

Project Description:

Hub in Your Community is a sport-based, early intervention programme supporting young people aged 11–17 and women and girls under 25 who are at risk of involvement in serious violence, alongside offering support to their families, parents, and carers.

Delivered by trained youth engagement coaches and volunteers with lived experience, the programme provides safe, inclusive sessions that combine physical activity with personal development. Each session begins with sport or activities to build confidence, teamwork, and engagement, alongside a dedicated e sports session introduced in 2025/26, offering an alternative way for young people to participate, build skills, and connect.

The second half of each session focuses on workshops and discussions that support emotional well-being, life skills, and positive decision-making. Participants benefit from mentoring, mental health support, team-building activities, and opportunities to gain accredited qualifications, while also connecting with wider community services.

New for 2026/27, the programme expands to include dedicated support for parents and carers through workshops designed to strengthen family relationships, increase awareness of risks such as exploitation, and provide practical strategies and access to further support.

Overall, the project aims to reduce vulnerability to crime, improve well-being, and empower young people and their families to make positive life choices.





Box Smart



Delivery Organisation: City of Hull Sport and Community Group CIC

Predominant Approach: Sports Programme/After-School Programme

Schedule

Day: Monday

Time: 7.30pm to 9pm

Beneficiary: Young people aged 16 to 18 at risk of serious violence

Day: Tuesday

Time: 6pm to 7.30pm

Beneficiary: Women aged 18 to 25 at risk of serious violence

Day: Tuesday

Time: 7.30pm to 9pm

Beneficiary: Men aged 18 to 25 at risk of serious violence

Day: Wednesday

Time: 6pm to 7.30pm

Beneficiary: Young people aged 10 to 12 at risk of serious violence (school years 6 & 7)

Day: Thursday

Time: 6pm to 7.30pm

Beneficiary: Young people aged 12 to 14 at risk of serious violence (school years 8 & 9)

Day: Friday

Time: 6pm to 7.30pm

Beneficiary: Young people aged 14 to 16 at risk of serious violence (school years 10 & 11)

Local Authority Areas Covered: Hull

Constituencies Covered: Hull North & Cottingham

Wards Covered: Orchard Park

Project Description:

Box Smart is a place-based diversionary sports programme supporting young people on the Orchard Park estate in North Hull and across the city. It works alongside local services to avoid duplication, engage young people most at risk of violence, and share best practice to ensure long-term impact.

The programme delivers three weekly sessions for school-aged young people and two sessions for young adults (male and female), with a new 16–18 session launching to support those at risk of becoming NEET. It uses sport and physical activity to reduce involvement in crime and violence, while improving mental well-being, social connection, and future aspirations.

Each session includes boxing-inspired fitness activities, followed by discussions on well-being and life skills such as stress management, relationships, and confidence. Sessions end with a “cool down” in the community café, where participants can socialise, access partner support (e.g. police, mental health services, and advice agencies), and take part in informal workshops.

Box Smart works in partnership with schools, Humberside Police, Connect Well, Citizens Advice, Active Humber, and St Michael’s Youth Project to identify and support participants. Each young person receives a goal-setting journal to encourage reflection and progression into other positive activities.

Sessions typically support 15 to 20 participants and are open-ended, allowing ongoing engagement while promoting pathways into further opportunities.





Breaking the Cycle: Mentoring



Delivery Organisation: Tigers Sport and Education Trust

Predominant Approach: Sports Programme/
Mentoring Programme

Schedule: Flexible

The Breaking the Cycle intervention is delivered flexibly, responding to the individual needs and levels of risk presented by each young person. While the support is tailored on a case-by-case basis, participants are typically seen at least once per week. However, the frequency of sessions may increase where there are heightened concerns around a young person's safety or well-being, ensuring that support remains responsive, consistent, and proportionate to need.

Delivery sites are strategically selected using local demographic data and anti-social behaviour (ASB) rates to ensure sessions are held in areas with the highest need.

These areas will be identified through ongoing consultation with young people, local partners (including police and social care), and strategic involvement in city-wide multi-agency meetings such as the Youth Prevention and Diversion Group, weekly Diversion Meetings, and MAYVE (Multi-agency Youth Violence and Exploitation).

This collaborative approach will ensure the project remains responsive to emerging trends, localised issues, and community needs, enabling targeted and impactful delivery.

Local Authority Areas Covered: Hull

Constituencies Covered: Hull East, Hull North & Cottingham, Hull West & Haltemprice

Wards Prioritised: Orchard Park & University, Bilton Grange & Longhill, Bransholme, Ings, Newington & Gipsyville

Project Description:

Breaking the Cycle delivers a city-wide youth diversion programme for 8 to 18 year olds in Hull, focusing on those at risk of anti-social behaviour, exclusion, or exploitation. It supports community safety by reducing youth violence, building trust in policing, and providing early intervention.

The project combines multi-sport sessions, targeted outreach, and workshops across key areas of Hull, alongside girls-only and inclusive sessions for young people with additional needs. Detached youth work is also delivered during high-risk periods.

A key element is trauma-informed mentoring, offering one-to-one support for young people referred by services such as Youth Justice, schools, and social care. This helps address issues like exploitation, relationships, and emotional well-being, while supporting young people to reintegrate into group activities.

Delivered in partnership with local agencies and aligned with city-wide strategies, the project strengthens Hull's wider youth support network and promotes positive outcomes for vulnerable young people.





Empowering Futures



Delivery Organisation: Tigers Sport and Education Trust

Predominant Approach: Social Skills Training/ Intervention to Prevent School Exclusion

Schedule: Determined by host school

Participants will engage on a weekly basis for 11 weeks.

The structure is as follows:

Week 1: Social skills / building relationships

Week 2: Resilience

Week 3: Discipline / consistency

Week 4: Taking responsibility

Week 5: Organisation and planning

Week 6: Life skills – cooking

Week 7: Understanding & expressing emotions

Week 8: Dealing with setbacks

Week 9: Mindset training

Week 10: Reflection / Review

Week 11: Reward trip

Local Authority Areas Covered: Hull & East Riding of Yorkshire

Constituencies Covered: TBC

Wards Covered: TBC

Project Description:

Empowering Futures is a targeted early-intervention programme supporting pupils at risk of disengagement, exclusion, or poor behaviour across primary and secondary schools in Hull and East Riding. It focuses on building resilience, discipline, teamwork, and responsibility to improve both academic engagement and personal development.

Delivered in small groups (up to four pupils), the 10-week programme provides intensive, relationship-based support through practical activities and structured sessions covering social skills, emotional well-being, life skills, and mindset. Pupils are identified by schools based on need, with a focus on those showing early signs of behavioural or emotional challenges.

A behaviour reward system encourages consistent positive choices, culminating in a reward trip for those who meet expectations. The programme also includes ongoing mentoring, school collaboration, and follow-up support to sustain progress beyond delivery.

Overall, the project aims to equip young people with the confidence, skills, and mindset needed to succeed in school and everyday life, supporting long-term positive outcomes.





Fairplay 16+



Delivery Organisation: Co-ordinated by North East Lincolnshire Council | Delivered by: Grimsby Town Foundation, Creating Positive Opportunities (CPO), Centre 4, YMCA Humber, Fusion Well-being Centre and The Trin

Predominant Approach: Sports Programme/ Education Programme

Schedule: Each provider within the consortia will deliver two hours of delivery over a 40 week period. The length of time that a young person engages with the provision will vary depending on the individuals needs.

Local Authority Areas Covered: North East Lincolnshire

Constituencies Covered: Great Grimsby & Cleethorpes

Wards Covered: Sidney Sussex, South, East Marsh, Heneage, Croft Baker

Programme Description:

Co-ordinated by North East Lincolnshire Council, the programme offers young people aged 16 to 25, who are now too old to participate in NELC Fair Play League, the opportunity to continue enjoying a weekly sporting activity with their chosen organisation. The programme is supported by a second hourly session which focuses on education on the prevention of ASB / serious violence and building their personal educational journey.

All delivery partner organisations will have access to Pol-Ed which will be embedded within the programme, specifically utilising the 12 – 18 youth input sections. The weekly educational input will cover all 17 youth inputs, with a focus on the specific programmes connected to ASB and serious violence.

This programme of activities will follow the guidelines within the YEF Youth Work and Violence Prevention document by offering Specialist Youth Services that can deliver effective targeted support. The young people / young adults selected to be engaged will be at risk of involvement in ASB and serious violence.

To ensure that there is an exit strategy, the project will also deliver Level 1 and Level 2 football coaching qualifications to these young people, where appropriate, in a bid to grow future coaches, so local young people can feed into training and supporting their younger peers.

This will form part of a sports leadership programme for young people aged over 16. The 12-week Sports Leaders Education Programme, delivered by Grimsby Town Foundation at Blundell Park, will provide 16+ year-olds with the opportunity to study the Sports Leaders Level 1 qualification within a professional football environment. We will pilot this with one cohort, so approximately 12 young people.

The programme will combine classroom-based learning with practical leadership opportunities, enabling participants to develop key skills such as communication, teamwork, organisation, and confidence. Delivered by experienced education staff, the course will support young people to achieve a nationally-recognised qualification while also developing employability skills and clear pathways into further education, coaching, volunteering and careers within sports and the wider community.





Iron Goals



Delivery Organisation: The Iron Foundation

Predominant Approach: Sports Programme

Schedule

Sessions will run on a weekly basis

Monday: Crosby 3G, Scunthorpe 6pm to 6:45pm for ages 8 to 13 years

Monday: Crosby 3G, Scunthorpe, 6:45pm to 7:30pm for 14+ years

Fridays: Brumby, Scunthorpe 8:00pm to 10:00pm for ages 14 to 19 years

Local Authority Areas Covered: North Lincolnshire

Constituencies Covered: Scunthorpe

Wards Covered: Crosby & Park, Kingsway with Lincoln Gardens



Project Description:

The programme is a community-based football and youth engagement initiative run by the Iron Foundation in Scunthorpe North. Its main goal is to engage young people in positive activities, reduce anti-social behaviour, and support their personal development through sport.

It delivers free, accessible football sessions led by qualified coaches, combining physical activity with informal mentoring, education, and early support. Sessions include discussions on local issues, positive decision-making, and opportunities for one-to-one support.

The programme works closely with local partner organisations to connect young people with specialist services when needed. It runs weekly sessions for different age groups in Crosby and Brumby, using a flexible approach to adapt to participants' needs.

Open to all on a "turn up and play" basis, the programme removes barriers to participation and encourages attendance through incentives like food and drinks. Ongoing engagement with coaches helps build trust and ensures continued support beyond sessions.

Overall, the intervention uses sport as a tool to improve well-being, strengthen community ties, and prevent youth violence. It remains open to all during the summer to meet increased demand, while plans are in place to refine its long-term structure and eligibility criteria.





ED Navigators



Delivery Organisation: NHS Humber Health Partnership

Predominant Approach: A & E Navigators

Schedule: Flexible

The level and frequency of support provided are tailored to each client's individual needs, risks, and the circumstances surrounding their attendance at Hull Royal's Emergency Department. Engagement is therefore flexible and responsive rather than fixed.

Throughout the intervention, flexibility remains key. If a client's circumstances change or risks increase, the level of support can be adjusted accordingly to ensure their safety and continued engagement.

Local Authority Areas Covered: Predominantly Hull and East Riding of Yorkshire, however as a Major Trauma Centre, it is possible that the hospital may attract patients that are from across the Humber region (or further afield).

Constituencies Covered: Predominantly (but not limited to) Hull East, Hull North & Cottingham, Hull West & Haltemprice

Wards Covered: Flexible depending on clients individual circumstances

Project Description:

The service delivers a flexible and person-centred A&E Navigator model that works towards removing the barriers to accessing support in the community, improving health outcomes for those presenting in A&E with violence-related injuries. The provision is available to residents aged 11 – 35 years, presenting in Hull Royal Infirmary's Emergency Department with a violence related injury due to physical interpersonal violence, including family, partner or community violence, and sexual assault.

Navigators work with individuals to design a tailored support plan to enable the young person to be connected to appropriate services following a needs assessment. They also follow up with the young person and their family following discharge. The A&E Navigator service provides trauma-informed care, taking into account Adverse Childhood Experiences (ACEs) and multiple-trauma.

The service works with key internal and external stakeholders to develop and embed a sustainable best practice response to improved identification of violence related injuries in A&E and access to support in the community. It helps by co-ordinating a multi-agency response that aims to reduce and manage the risk identified.

In 2026/27 the A&E Navigator service in North and North East Lincolnshire will be paused to enable systems development, including strengthening data, refining processes, and embedding the role within NHS structures.

NAVIGATORS



**Humber Health
Partnership**





Street First Aid



Delivery Organisation: St John Ambulance (April to September 2026); TBC following exercise to re-commission service (October to March 2027)

Predominant Approach: Education Programme/Awareness Campaigns

Schedule: Flexible

Under the current provision that is delivered and co-ordinated by St John Ambulance, each session can be scheduled for 60, 90 or 120 minutes. They all follow the same format and content but the option is given to fit in with various timetables from different hosts.

Local Authority Areas Covered: Hull, East Riding of Yorkshire, North Lincolnshire, North East Lincolnshire

Constituencies Covered: Potentially all constituencies - Humberwide provision

Wards Covered: Potentially all wards - Humberwide provision

Project Description:

Street First Aid aims to equip young individuals aged 11 to 25 with essential first aid skills and knowledge for responding effectively to health incidents they might encounter, such as wounds, drink spiking, and mental health crises.

This context-based Street First Aid initiative provides practical training relevant to their lives, enabling them to manage their health and that of their communities.

With the statutory requirement for first aid education in England's national curriculum, this programme presents a vital opportunity to extend this learning to young people across various education and youth settings, including in HMP secure estates in the Humber region. The project is supported by the four Community Safety Partnerships (CSPs) and the Humber VPP's A&E Navigator service across the Humber region.

The Street First Aid sessions are delivered by a trained facilitator who is a full-time employee. All facilitators are trained in first aid, safeguarding, and trauma awareness. They are also expected to have experience working with young people, ideally in a delivery setting, and to be confident engaging with them across a variety of environments. The programme is designed to focus on simple, memorable skills that young people can easily understand and replicate.

**St John
Ambulance**



Violence Prevention Youth Health Champions



Delivery Organisation: We Do Wellbeing on behalf of the Royal Society for Public Health (RSPH)

Predominant Approach: Education Programme/ Awareness Campaigns

Schedule: Flexible

Practitioners and youth-facing delivery leads initially engage through the Level 3 Award in Violence Prevention and Reduction, which typically involves 16 guided learning hours delivered over several sessions, with a total qualification time of approximately 60 hours including independent learning and assessment.

Following this, participants attend a one-day “Train the Trainer” session to develop the facilitation skills required to deliver the Young Health Champions programme within their own organisations or communities.

Young people participate in the Level 2 Violence Prevention Young Health Champions programme, which is typically delivered through six sessions over a six-week period. Sessions are usually delivered weekly and include interactive learning activities, group discussions and practical exercises that culminate in the development and presentation of a peer-led violence prevention campaign.

After the formal training ends, participants are encouraged to continue applying their learning through peer engagement, community awareness activities and ongoing collaboration with local violence prevention partners.

Local Authority Areas Covered:

Hull, East Riding of Yorkshire, North Lincolnshire, North East Lincolnshire

Constituencies Covered: Potentially all constituencies - Humberwide provision

Wards Covered: Potentially all wards - Humberwide provision



Project Description:

The Violence Prevention Youth Health Champions Programme is a workforce development and community initiative that aims to strengthen violence prevention knowledge, leadership, and peer education across the Humber region.

It combines three key elements:

1. Level 3 training to upskill practitioners in understanding, preventing, and responding to violence
2. Train the Trainer programme to build local capacity for delivering training
3. Level 2 Violence Prevention Young Health Champions qualification that equips young people (16 to 25) to promote violence prevention among their peers

Delivered through RSPH-accredited qualifications, the programme uses a structured but flexible approach, adapting to participants’ needs and local contexts. Training is interactive and focuses on public health approaches, risk factors, and developing peer-led awareness campaigns.

The programme operates in small group settings to encourage participation and includes ongoing support, such as mentoring, resources, and opportunities for community engagement.

Overall, it provides a scalable and sustainable model by upskilling professionals, creating a local training workforce, and empowering young people to act as advocates—helping communities better prevent and respond to violence.





Safer Futures



Delivery Organisation: Co-ordinated by the Humber VPP with various training providers depending on the topics being delivered

Predominant Approach: Education Programme/ Awareness Campaigns

Schedule: Flexible

Engagement with the intervention will be flexible and largely ad hoc, with a commitment to offering at least one training opportunity per quarter. The duration of each interaction will vary depending on the topic and format, ranging from single-session inputs to more extended programmes of learning.

Local Authority Areas Covered: Hull, East Riding of Yorkshire, North Lincolnshire, North East Lincolnshire

Constituencies Covered: Potentially all constituencies – Humberwide provision

Wards Covered: Potentially all wards – Humberwide provision



Project Description:

The intervention is a workforce development and system-strengthening programme designed to build the knowledge, skills and confidence of professionals and volunteers working with young people and communities affected by violence. Its primary purpose is to embed trauma-informed, preventative approaches into everyday practice across statutory services, the youth justice sector, grassroots organisations, and the wider community. A key feature of the intervention is that it not only focuses on practitioners, but also incorporates targeted support for parents and carers, recognising their critical role in shaping outcomes for young people. Alongside this, the programme includes a small grants fund to enable organisations to pilot innovative approaches for supporting specific cohorts of young people and to embed learning from the Safer Futures programme into practice.

The intervention combines structured training, collaborative learning, and system-wide partnership development. Core areas of focus include trauma-informed practice, knife crime awareness and prevention, understanding neurodiversity, Adverse Childhood Experiences (ACEs), mentoring and relationship-based practice, and responding to exploitation, risk and vulnerability. These themes are underpinned by established concepts such as trauma-informed care, public health approaches to violence prevention, and relational practice. All of these emphasise understanding behaviour in context, early intervention, and the importance of trusted relationships. In addition to workforce training, specific sessions, resources and engagement opportunities will be developed to support parents and carers in understanding risk, building resilience, and strengthening their capacity to support young people effectively.

Ongoing support is a central component of the intervention. Beyond formal training sessions, the programme will facilitate continuous collaboration and knowledge sharing through the development of a local Violence Prevention Alliance. This alliance will bring together statutory agencies, youth justice professionals, community organisations and grassroots groups to share best practice, build relationships, coordinate responses, and sustain learning over time. It will also provide a mechanism for organisations receiving small grants to share insights, evaluate pilot activity, and support the wider system to adopt effective approaches. In this way, the intervention seeks to ensure that learning is not only acquired but embedded and sustained.

Prevention and Safety Education Programme



Delivery Organisation: Co-ordinated by the Humber VPP with various training providers depending on the topics being delivered

Predominant Approach: Education Programme/ Awareness Campaigns

Schedule: Flexible

This flexible model ensures that the intervention can function both as a continuous, developmental programme and as a responsive, needs-led offer, enabling settings to balance breadth of reach with depth of impact.

Local Authority Areas Covered: Hull, East Riding of Yorkshire, North Lincolnshire, North East Lincolnshire

Constituencies Covered: Potentially all constituencies - Humberwide provision

Wards Covered: Potentially all wards - Humberwide provision

Project Description:

The Prevention and Safety Education Programme brings together a range of educational resources including Pol-Ed, Not In Our Community (NIOC) and other locally and nationally developed resources to provide a comprehensive, prevention-focused offer for use by educational settings and organisations working with children and young people. The programme includes resources suitable for children and young people aged 5–18, and up to 25 for those with SEND or EHCPs. It aims to support them in developing the knowledge, skills and resilience needed to make safe, informed decisions and reduce their risk of harm.

The programme includes PSHE curriculum-based content including relationships and consent, safeguarding and personal safety, understanding the law and consequences, and emotional wellbeing alongside targeted, issue-specific interventions – such as criminal and sexual exploitation, violence and weapon-related harm, anti-social behaviour, online harm, hate crime and radicalisation.

As the single point for collation, we can ensure that resources are quality checked and proven to reduce harm. We work closely with our educational partners, community-based organisations and our Safer Schools and Neighbourhood Policing teams to provide contextual and joined up delivery of approved resources.

A key strength of the programme is its adaptability to meet the specific needs of participants and local contexts. Content can be tailored according to the priorities of the school or youth setting. Lessons can be timetable-based around planned curriculum or seasonal themes but can also be delivered ad hoc in response to local policing intelligence and emerging threats or trends identified at the school/organisational level.

For example, if we identify an issue emerging within a ward area, or around a particular school – we can swiftly mobilise a cohesive intervention that includes delivery by teachers in school, assemblies delivered by local Safer Schools police officers and complementary input from youth organisations and other services working with young people in the locality.





Young Futures Fund



Delivery Organisation: The Humber VPP / Hull City Council

Predominant Approach: Bespoke interventions budget to support individuals or address emerging trends identified through the Young Futures Panel

Schedule: Flexible

The allocation of funding and the nature of the intervention provided are determined through a multi-agency decision-making process, ensuring that support is aligned with the assessed needs of the child or family. This approach brings together relevant professionals to agree the most appropriate level and type of intervention, enabling resources to be used effectively and ensuring that provision is coordinated, targeted, and responsive to risk.

The duration of the bespoke delivery will vary depending on the child's need, circumstances and the nature of the intervention.

Local Authority Areas Covered: Hull

Constituencies Covered: Predominantly (but not limited to):

- Hull East
- Hull North & Cottingham
- Hull West & Haltemprice

Wards Covered: Flexible depending on client's individual circumstances



Project Description:

The Bespoke Interventions Fund is a targeted early intervention programme designed to support young people (and their families) who are identified as being at the highest risk of involvement in serious violence. The fund is informed by intelligence, insights, and emerging trends identified through the Young Futures Panel, ensuring that interventions are responsive to current and localised need. Its core purpose is to intervene early, reduce risk factors associated with serious violence, and strengthen protective factors that enable young people to lead safer, healthier lives.

The programme enables funding to support a range of tailored interventions that are responsive to individual circumstances. Key components may include one-to-one mentoring, intensive keyworker support, family-based interventions, trauma-informed therapeutic approaches, and targeted group work where appropriate. Interventions are underpinned by established theories and concepts, including public health approaches to violence prevention, trauma-informed practice, and behaviour change models such as COM-B (Capability, Opportunity, Motivation – Behaviour). All funded activity is evidence-led and aligned with the Youth Endowment Fund (YEF) Toolkit, ensuring that approaches reflect best practice in reducing youth violence. Where innovative or emerging responses are required, these will be supported by a clear evidence-informed rationale and ongoing evaluation.

The intervention does not follow a single fixed curriculum. Rather, it operates within a structured but flexible framework. This allows delivery partners to tailor content, intensity, and approach based on the needs, risks, and strengths of each young person and their family. Adaptations may include varying the duration and frequency of support, adjusting delivery methods (e.g. one-to-one, group-based, or family sessions), and incorporating culturally relevant or context-specific approaches. This flexibility is a key strength of the fund, enabling truly personalised support while maintaining alignment with evidence-based principles.

Follow-up support is a key element of the programme. Recognising that sustained change requires ongoing reinforcement, participants will be offered continued support after the formal intervention ends. This may include step-down support, regular check-ins, signposting to additional services, or access to ongoing mentoring or peer networks. Follow-up is intended to consolidate progress, reduce the risk of relapse, and ensure that young people and their families remain connected to appropriate support systems.

INTERVENTION - TESTIMONIALS

The following testimonials and reflections highlight the real-world impact of our interventions to prevent and reduce serious violence. Grounded in a public health approach, these programmes prioritise early intervention, targeted support, and meaningful diversionary activity—offering young people positive alternatives and pathways away from harm.

Across the Humber region, partners have worked collaboratively to engage individuals at risk, address the root causes of violence, and provide sustained support tailored to their needs. The voices captured here demonstrate how trusted relationships, accessible services, and structured activities can build resilience, improve well-being, and create lasting change.

Together, these insights illustrate not only the effectiveness of intervention strategies, but also the importance of listening to young people and communities in shaping safer futures.

NAVIGATORS

"Whenever I am anxious, stressed or worried I know I can contact them and she will contact me at her earliest convenience, which is always the same day. Shona reassures me and helps me think logically and break situations down."

"Their kindness and sensitivity concerning my circumstances was absolutely phenomenal."

"I don't feel judged and feel comfortable to ring and talk with them when I am not sure of things."

"I cannot thank the Navigators enough for their continuous support and care. I absolutely needed them and I'm so lucky to have the opportunity to be supported by caring, kind, considerate people who listen to me and make me feel important and heard. There will never be enough words to show how grateful me and my family are. Thank you."

"Just wanted to say a huge thank you for helping me through what has been one of the toughest times of my life. You and your colleagues do such a great job, I genuinely appreciate it. I don't think I would have made it this far without you."



SPORTS PROGRAMMES

"I know some of the other kids from school and its been good to be able to access the project together. My favourite activities have been the boxing, runs in the park, and learning how to cook."

"There is nothing in the streets for me, so I've decided to calm down."

"My ambition is to improve my mental health, stop getting into trouble, and learn some new skills."

"If I didn't attend these sessions, I'd genuinely be out and about feeling sorry for myself. I very much came into this with a negative attitude and have come out with a positive one. I've never been able to find my place and I think I've finally found that here."

"Box Smart has come at the right time for me as I was probably on the verge of making some stupid decisions that would have got me in trouble. It's been great to reconnect with Mike and Bob. Being in the gym has helped me improve my mental health and helped combat some challenges with anxiety and depression, and even though its early in the project, I feel more confident about my future."

"The thing I enjoy about Box Smart is being with Bob and having the chance to get back in the ring again. It's a good route for me to get rid of aggression and keep out of trouble. I don't particularly enjoy the learning activities as I want to be active but that said, I think they have benefited me in terms of improving my mood and attitude."



SOCIAL SKILLS TRAINING

"This young person has made incredible progress. Where he once struggled to stay in control, he now takes ownership of his emotions and supports others to do the same. His journey shows the power of creating safe spaces and trusting relationships."

"I am enjoying talking about myself more and being open."

"I like myself more and have ditched some negative people in my life."

"The group has helped me recognise my early warning signs so I am better now at knowing when I am starting to 'lose it' and I know what to do to get myself back on track so I don't get into trouble. I still do, but not as much, particularly when we have a supply teacher as I don't like change as they don't know me, and I don't know them [...] I think I respond much better now when things bother me - I don't always react straight away."

"She is a totally different child. She talks, she tells me how she's feeling, it's like talking to a teenager, the way she can express herself is amazing. I am so pleased she has done this. It really has helped and I will continue to do it with her at home."

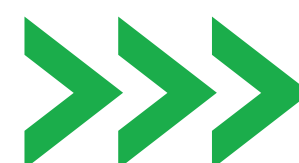
"She feels more comfortable talking about her thoughts and feelings now. She will ask for 5 minutes when she needs to regulate and manage her feelings. She's using words to express when she needs help, particularly when she gets heightened."

"She has enjoyed the WRAP sessions and has brought home the wellness jar and talked about it to me. She's enjoyed the hands-on sessions. She's calmer now and doesn't hang out with the people who were a problem to her. I would recommend WRAP."

"He is generally calmer in class and easier to calm if he does become dysregulated."

"He talks to me more if things have bothered him at school. He generally comes home from school calmer."

More
Case Studies



SCAN QR CODE



- › **Learn about the Humber VPP: Visit our website**
- › **Keep up to date: Subscribe to our newsletter**
- › **Connect with us: Follow us on social media**

Or scan the QR code:

